

JarTrek™

JarTrek EnterPrize - Workstation Desc: MAIN REGISTER Personality: BINGO Bingo Session: EVENING 11/05/2009 14:51

Flash Park Bowl Misc. Tabs Void Clear Settle Cash Send Go To Sleep Quit

Tendered: \$40.65 Change: \$0.00 Total: \$40.65

Qty.	Description	Amount
5	EARLY BIRD	\$10.00
5	JACKPOT	\$25.00
1	Cheese Burger	\$2.50
	Medium	
	American Cheese	
	L.T.M	
1	BUD LIGHT	\$1.55
1	COORS LIGHT	\$1.60
	SUBTOTAL	\$40.65
	SALES TAX	
	TOTAL SALE	\$40.65
	AMOUNT TENDERED	\$40.65
	CHANGE DUE	

1 2 3 \$5 4 5 6 \$10 7 8 9 \$20 0 00 . \$50 @ NS Item Corr Ret

UP DOWN PAGE UP PAGE DOWN CHIP IT CHIT SCAN ACCT SCAN

Employee: 10 (02:51 PM)

Domestic Beer Import Beer Draft Beer Sand-wiches BEVER-AGES EARLY BIRD BIG POT MYST-ERY JACK-POT

HOT NUT SUPER CRAZY BOWL Member Dues % DISC Dauber BINGO PAY OUT GIFT SALE

The Club Management Solution for
Food, Beverage and Gaming!

and now...



There are many point of sale systems for restaurants and bars, and a few that only track small games, or bingo point of sale systems, or membership . However few if any offer a complete solution for member based businesses and social organizations. The JarTrek Point of Sale system has a unique combination of all of these features that distinguish it from any other single solution. Features such as:

- Food and beverage control including kitchen and bar requisition printing, split check, and server management functions for table service operations. Cashier and server reports by employee, shift, or workstation. Password level security by employee and job code.

- Multiple price levels, scheduled or on demand, for events such as happy hour, entertainment or functions such as banquets. Available system wide or at individual terminals.

- Quick scan chits replace or enhance traditional setup chips for inventory accuracy and accountability.

- Gift card sale, charge up and redemption tracking.

- Scanning interface for gaming and fast check pickup and settlement.

- Unrivalled small games tracking with serialized inventory, sales, payouts, and profit analysis. Comprehensive reports to satisfy jurisdictional requirements.

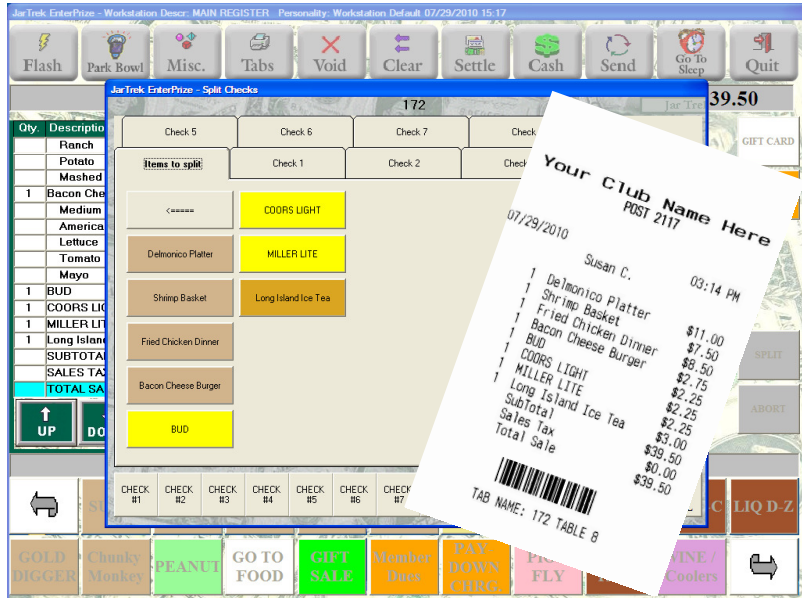
- An electronic journal that records every transaction in detail. Powerful sort, filter and date range tools allow you to pinpoint and review activity by employee, menu item, serial number, or transaction type.

- Exclusive winner lookup information available in printed Bar Book, or on our touch-screen interface Kiosk.

- Sales can be separated by revenue center, (e.g. Bingo/Food Service/Bar) for separate jurisdictional and management reports.

- Organize and maintain membership information, including dues renewal and payment accounting. Print customized membership wallet cards, letters, post cards and labels with your own logos and graphics.

- Provide Bingo session sales, pay out and profit reports by game, with the ability to create customized sessions by date assigned for play. Manage player data, award and redeem points, and create promotions that automatically reward additional points (based on birthday, anniversary, etc.).



A well managed club needs to track food and beverage sales because there is little room for error with today's tight margins. You need to provide good product at the best possible price to keep your members satisfied. JarTrek provides the control you need to reduce waste, ensure items are sold at correct price levels, and prepared in an accurate and timely fashion.

Bartenders and wait staff are lead through an intuitive order process that requires minimal training. Password level security ensures that only authorized persons have access to managerial functions such as voids, item correct, returns, discounts and price level changes.

Each workstation can be tailored to the task at hand. A workstation can be set up as a wait terminal for cashier or self banking, a quick service bar terminal with single or dual drawers, or a bingo sales station. As the need arises its role can be changed to suit multi-use rooms and functions, each with specific item and function layout, sign in and cashiering options.

Using JarTrek's unique personality feature a bingo station can be changed to be a banquet bar or wait station, saving the expense of additional hardware and making the most of your investment.

TAB NAME: 172 TABLE 8
Susan C.
07/29/2010 03:07 PM

1 Delmonico Platter
Medium Rare
Potato
Baked Potato
Cole Slaw

1 Shrimp Basket
French Fries

1 Fried Chicken Dinner
Side Salad
Ranch
Potato
Mashed Potato

1 Bacon Cheese Burger
Medium Well
American Cheese
Lettuce
Tomato
Mayo

JarTrek EnterPrice - Change Station Personality

Touch the personality to switch to and then touch the SWITCH button, or touch CANCEL to not switch. Use the left-arrow and right-arrow buttons, if necessary, to scroll the screen.

BAR
BINGO
DINING
DUAL DRAWER

SWITCH CANCEL

Jar Trek Personality Templates

Template Description: DINING
Override Price Level: <None>
Jar Revenue Center: 1 ~ Bar
Sales Revenue Center: 12 ~ Dining Room
Log In Style: Wait/Precheck/Cashier/Self Banking stat
Print Receipt? Y - Receipt will always print
Remote Setting: 3 - Both Remotes
Install Code: F-ticket sales/payouts, with other sales
Show Actual Profit? Profit WILL NOT show on Close Screen

Select the key to place on the grid:

SCREEN 1 SCREEN 2 SCREEN 3 SCREEN 4 SCREEN 5

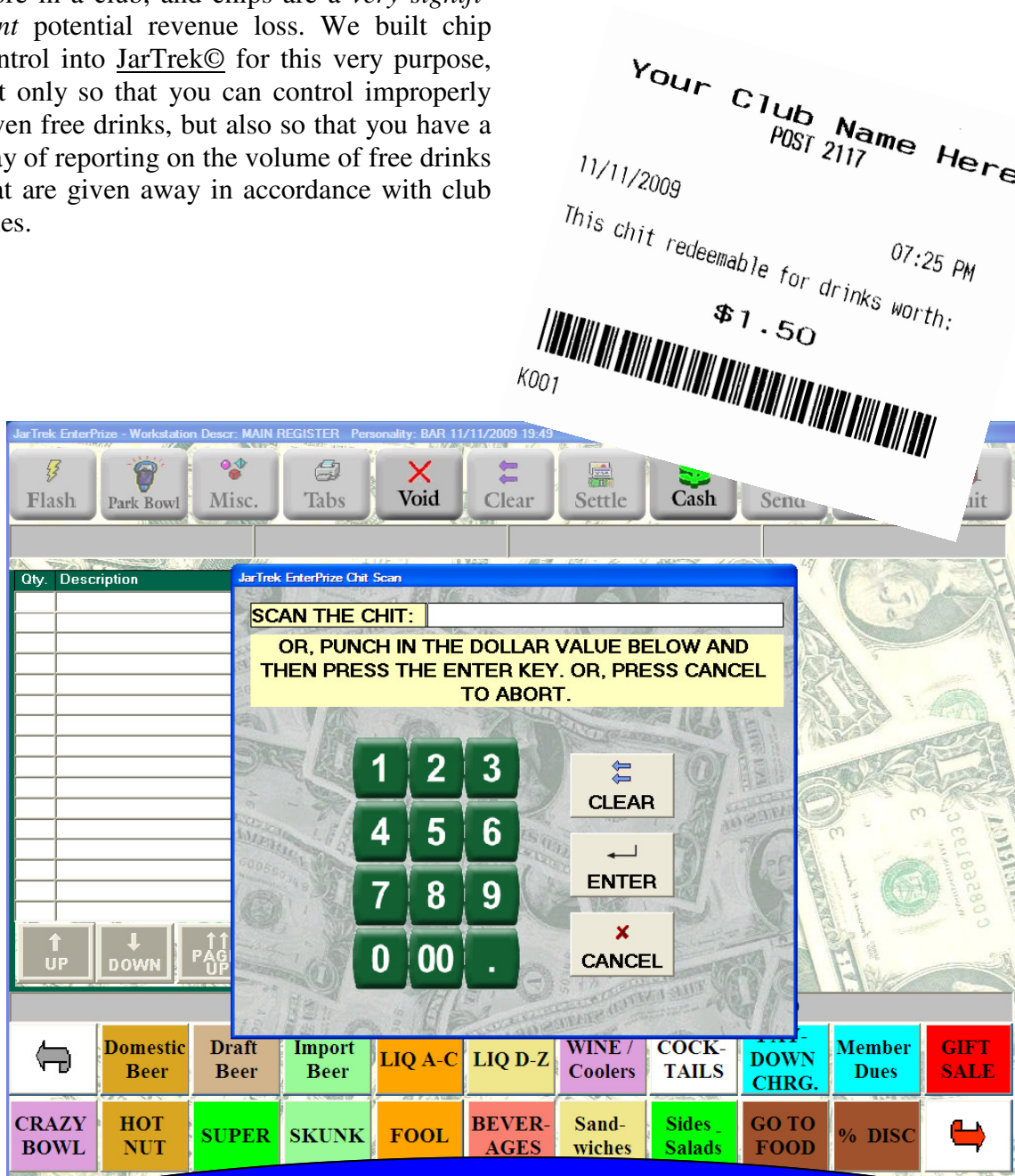
<	Apps	Entrees	Sandwiches	Sides Salads	Not Used	Not Used	Not Used	% DISC	\$ DISC	GIFT SALE
Not Used	BEVERAGES	Not Used	Not Used	Not Used	Not Used	Not Used	Not Used	Not Used	Not Used	>

Ok Cancel

Add New Change Delete Find Appearance Copy Quit

JarTrek's personality feature can be customized for each individual workstation, and changed at the station as the need arises.
This can eliminate the need for additional stations!

With a number of clubs there is a great deal of revenue being given away, more than most realize. Because JarTrek® is a Point-Of-Sale package, we ensure that you charge the correct amount for your food and beverage sales, and check that cash drawers balance at the end of the day. We went well beyond that, and beyond what most Fine Dining Point-of-Sale software and cash registers do, because you have special needs that restaurants do not have. One example of this is our unique setup control feature. Beer and liquor chips (a.k.a. setups) are used much more in a club, and chips are a *very significant* potential revenue loss. We built chip control into JarTrek® for this very purpose, not only so that you can control improperly given free drinks, but also so that you have a way of reporting on the volume of free drinks that are given away in accordance with club rules.



The Chit Redemption screen allows the cashier to record the receipt of a setup chit in exchange for product (beer, liquor, etc.). JarTrek treats chits as carefully as Cash and other forms of tender

The bulk of many clubs' revenue is derived from the sale of tip jars, punch boards and related gambling devices. If pull tabs "walk out the door" or if bartenders "borrow" from the profits, or bingo operators miscalculate pay outs, there is the potential to lose a *great deal* of money.

Neither Fine Dining software nor Cash Registers can track gaming inventory and profits in any meaningful way. JarTrek® was originally built to solely manage gaming inventory and profits in a way that no restaurant software or cash register can duplicate. As we continually add point-of-sale functionality to JarTrek®, we never forget the importance of the gaming revenue to your club. And we have reports designed specifically for the jurisdiction (county or state) in which you are located.

JAR SALES REPORT

Your Club Name Here

Date Printed: 5/6/05
Date Range: 01/01/2005 To 12/31/2005

Jar Type	Rev.	Serial #
GREAT	1	30002
GREAT	1	30003

GREAT

20002

20003

20004

RWB

Number of Jars: 2

Number of Jars: 3

03/28/2005 03/28/2005

SK UN

License #

01/01/2005 To 03/06/2005

TRIPLE

Revenue

Grand

Jar Type	Serial #	Date In	Date Out	Flavor	Not Flavored	Cost	Income	Game Cost	Price Cost	Cash Value	Computed	Actual	Over/Short
TRIPLE	10001	03/28/2005	03/29/2005	960	0	\$1.00	960.00	1995	750.00	0.00	210.00	210.00	0.00
TRIPLE	10002	03/13/2005	03/13/2005	960	0	\$1.00	960.00	1995	750.00	0.00	210.00	210.00	0.00
TRIPLE	10003	03/18/2005	03/19/2005	960	0	\$1.00	960.00	1995	750.00	0.00	210.00	190.00	(20.00)
TRIPLE	10004	03/29/2005	03/30/2005	960	0	\$1.00	960.00	1995	750.00	0.00	210.00	300.00	90.00
TRIPLE	20002	03/11/2005	03/11/2005	720	0	\$1.00	720.00	1895	610.00	0.00	110.00	110.00	0.00
TRIPLE	20003	03/22/2005	03/24/2005	720	0	\$1.00	720.00	1895	610.00	0.00	110.00	90.00	(20.00)
TRIPLE	20004	03/02/2005	03/04/2005	720	0	\$1.00	720.00	1895	610.00	0.00	110.00	120.00	10.00
TRIPLE	20005	03/20/2005	03/30/2005	3340	0	\$1.00	3340.00	1795	2750.00	0.00	590.00	540.00	(50.00)
TRIPLE	20006	03/13/2005	03/14/2005	610	0	\$1.00	610.00	1695	525.00	0.00	85.00	85.00	0.00
TRIPLE	20007	03/24/2005	03/28/2005	610	0	\$1.00	610.00	1695	525.00	0.00	85.00	85.00	0.00
TRIPLE	20008	03/28/2005	03/28/2005	610	0	\$1.00	610.00	1695	525.00	0.00	85.00	75.00	(10.00)
TRIPLE	20009	03/28/2005	03/28/2005	610	0	\$1.00	610.00	1695	525.00	0.00	85.00	65.00	(20.00)
TRIPLE	20010	03/28/2005	03/28/2005	610	0	\$1.00	610.00	1695	525.00	0.00	85.00	85.00	0.00
TRIPLE	20011	03/28/2005	03/29/2005	610	0	\$1.00	610.00	1695	525.00	0.00	85.00	100.00	15.00
TRIPLE	20012	03/28/2005	03/31/2005	610	0	\$1.00	610.00	1695	525.00	0.00	85.00	25.00	(60.00)
TRIPLE	20013	03/28/2005	03/31/2005	610	0	\$1.00	610.00	1695	525.00	0.00	85.00	25.00	(60.00)
TRIPLE	20014	03/28/2005	03/31/2005	610	0	\$1.00	610.00	1695	525.00	0.00	85.00	25.00	(60.00)
TRIPLE	20015	03/28/2005	03/31/2005	610	0	\$1.00	610.00	1695	525.00	0.00	85.00	25.00	(60.00)
TRIPLE	20016	03/28/2005	03/31/2005	610	0	\$1.00	610.00	1695	525.00	0.00	85.00	25.00	(60.00)
TRIPLE	20017	03/28/2005	03/31/2005	610	0	\$1.00	610.00	1695	525.00	0.00	85.00	25.00	(60.00)
TRIPLE	20018	03/28/2005	03/31/2005	610	0	\$1.00	610.00	1695	525.00	0.00	85.00	25.00	(60.00)
TRIPLE	20019	03/28/2005	03/31/2005	610	0	\$1.00	610.00	1695	525.00	0.00	85.00	25.00	(60.00)
TRIPLE	20020	03/28/2005	03/31/2005	610	0	\$1.00	610.00	1695	525.00	0.00	85.00	25.00	(60.00)
TRIPLE	20021	03/28/2005	03/31/2005	610	0	\$1.00	610.00	1695	525.00	0.00	85.00	25.00	(60.00)
TRIPLE	20022	03/28/2005	03/31/2005	610	0	\$1.00	610.00	1695	525.00	0.00	85.00	25.00	(60.00)
TRIPLE	20023	03/28/2005	03/31/2005	610	0	\$1.00	610.00	1695	525.00	0.00	85.00	25.00	(60.00)
TRIPLE	20024	03/28/2005	03/31/2005	610	0	\$1.00	610.00	1695	525.00	0.00	85.00	25.00	(60.00)
TRIPLE	20025	03/28/2005	03/31/2005	610	0	\$1.00	610.00	1695	525.00	0.00	85.00	25.00	(60.00)
TRIPLE	20026	03/28/2005	03/31/2005	610	0	\$1.00	610.00	1695	525.00	0.00	85.00	25.00	(60.00)
TRIPLE	20027	03/28/2005	03/31/2005	610	0	\$1.00	610.00	1695	525.00	0.00	85.00	25.00	(60.00)
TRIPLE	20028	03/28/2005	03/31/2005	610	0	\$1.00	610.00	1695	525.00	0.00	85.00	25.00	(60.00)
TRIPLE	20029	03/28/2005	03/31/2005	610	0	\$1.00	610.00	1695	525.00	0.00	85.00	25.00	(60.00)
TRIPLE	20030	03/28/2005	03/31/2005	610	0	\$1.00	610.00	1695	525.00	0.00	85.00	25.00	(60.00)
TRIPLE	20031	03/28/2005	03/31/2005	610	0	\$1.00	610.00	1695	525.00	0.00	85.00	25.00	(60.00)
TRIPLE	20032	03/28/2005	03/31/2005	610	0	\$1.00	610.00	1695	525.00	0.00	85.00	25.00	(60.00)
TRIPLE	20033	03/28/2005	03/31/2005	610	0	\$1.00	610.00	1695	525.00	0.00	85.00	25.00	(60.00)
TRIPLE	20034	03/28/2005	03/31/2005	610	0	\$1.00	610.00	1695	525.00	0.00	85.00	25.00	(60.00)
TRIPLE	20035	03/28/2005	03/31/2005	610	0	\$1.00	610.00	1695	525.00	0.00	85.00	25.00	(60.00)
TRIPLE	20036	03/28/2005	03/31/2005	610	0	\$1.00	610.00	1695	525.00	0.00	85.00	25.00	(60.00)
TRIPLE	20037	03/28/2005	03/31/2005	610	0	\$1.00	610.00	1695	525.00	0.00	85.00	25.00	(60.00)
TRIPLE	20038	03/28/2005	03/31/2005	610	0	\$1.00	610.00	1695	525.00	0.00	85.00	25.00	(60.00)
TRIPLE	20039	03/28/2005	03/31/2005	610	0	\$1.00	610.00	1695	525.00	0.00	85.00	25.00	(60.00)
TRIPLE	20040	03/28/2005	03/31/2005	610	0	\$1.00	610.00	1695	525.00	0.00	85.00	25.00	(60.00)
TRIPLE	20041	03/28/2005	03/31/2005	610	0	\$1.00	610.00	1695	525.00	0.00	85.00	25.00	(60.00)
TRIPLE	20042	03/28/2005	03/31/2005	610	0	\$1.00	610.00	1695	525.00	0.00	85.00	25.00	(60.00)
TRIPLE	20043	03/28/2005	03/31/2005	610	0	\$1.00	610.00	1695	525.00	0.00	85.00	25.00	(60.00)
TRIPLE	20044	03/28/2005	03/31/2005	610	0	\$1.00	610.00	1695	525.00	0.00	85.00	25.00	(60.00)
TRIPLE	20045	03/28/2005	03/31/2005	610	0	\$1.00	610.00	1695	525.00	0.00	85.00	25.00	(60.00)
TRIPLE	20046	03/28/2005	03/31/2005	610	0	\$1.00	610.00	1695	525.00	0.00	85.00	25.00	(60.00)
TRIPLE	20047	03/28/2005	03/31/2005	610	0	\$1.00	610.00	1695	525.00	0.00	85.00	25.00	(60.00)
TRIPLE	20048	03/28/2005	03/31/2005	610	0	\$1.00	610.00	1695	525.00	0.00	85.00	25.00	(60.00)
TRIPLE	20049	03/28/2005	03/31/2005	610	0	\$1.00	610.00	1695	525.00	0.00	85.00	25.00	(60.00)
TRIPLE	20050	03/28/2005	03/31/2005	610	0	\$1.00	610.00	1695	525.00	0.00	85.00	25.00	(60.00)
TRIPLE	20051	03/28/2005	03/31/2005	610	0	\$1.00	610.00	1695	525.00	0.00	85.00	25.00	(60.00)
TRIPLE	20052	03/28/2005	03/31/2005	610	0	\$1.00	610.00	1695	525.00	0.00	85.00	25.00	(60.00)
TRIPLE	20053	03/28/2005	03/31/2005	610	0	\$1.00	610.00	1695	525.00	0.00	85.00	25.00	(60.00)
TRIPLE	20054	03/28/2005	03/31/2005	610	0	\$1.00	610.00	1695	525.00	0.00	85.00	25.00	(60.00)
TRIPLE	20055	03/28/2005	03/31/2005	610	0	\$1.00	610.00	1695	525.00	0.00	85.00	25.00	(60.00)
TRIPLE	20056	03/28/2005	03/31/2005	610	0	\$1.00	610.00	1695	525.00	0.00	85.00	25.00	(60.00)
TRIPLE	20057	03/28/2005	03/31/2005	610	0	\$1.00	610.00	1695	525.00	0.00	85.00	25.00	(60.00)
TRIPLE	20058	03/28/2005	03/31/2005	610	0	\$1.00	610.00	1695	525.00	0.00	85.00	25.00	(60.00)
TRIPLE	20059	03/28/2005	03/31/2005	610	0	\$1.00	610.00	1695	525.00	0.00	85.00	25.00	(60.00)
TRIPLE	20060	03/28/2005	03/31/2005	610	0	\$1.00	610.00	1695	525.00	0.00	85.00	25.00	(60.00)
TRIPLE	20061	03/28/2005	03/31/2005	610	0	\$1.00	610.00	1695	525.00	0.00	85.00	25.00	(60.00)
TRIPLE	20062	03/28/2005	03/31/2005	610	0	\$1.00	610.00	1695	525.00	0.00	85.00	25.00	(60.00)
TRIPLE	20063	03/28/2005	03/31/2005	610	0	\$1.00	610.00	1695	525.00	0.00	85.00	25.00	(60.00)
TRIPLE	20064	03/28/2005	03/31/2005	610	0	\$1.00	610.00	1695	525.00	0.00	85.00	25.00	(60.00)
TRIPLE	20065	03/28/2005	03/31/2005	610	0	\$1.00	610.00	1695	525.00	0.00	85.00	25.00	(60.00)
TRIPLE	20066	03/28/2005	03/31/2005	610	0	\$1.00	610.00	1695	525.00	0.00	85.00	25.00	(60.00)
TRIPLE	20067	03/28/2005	03/31/2005	610	0	\$1.00	610.00	1695	525.00	0.00	85.00	25.00	(60.00)
TRIPLE	20068	03/28/2005	03/31/2005	610	0	\$1.00	610.00	1695	525.00	0.00	85.00	25.00	(60.00)
TRIPLE	20069	03/28/2005	03/31/2005	610	0	\$1.00	610.00	1695	525.00	0.00	85.00	25.00	(60.00)
TRIPLE	20070	03/28/2005	03/31/2005	610	0	\$1.00	610.00	1695	525.00	0.00	85.00</		

Bartenders are wasting a great deal of time and money handwriting tip jar sales in the bar book and answering questions from customers. We responded with an automatically generated Bar Book, and then went one step further. The JarTrek Kiosk® is a touch-screen software package that allows your customers to look up seal winners on their own, *and* to view a club news screen to look at important upcoming events, daily specials, etc.

JarTrek EnterPrize - Look Up Serial Number

ENTER THE SERIAL NUMBER FROM YOUR JAR, THEN TOUCH THE "JAR INFO" BUTTON AT THE BOTTOM.

Serial #:	9186903E
Jar Type:	SUPER
Date:	05/22/2004
Time:	06:57 PM

WINNING TICKET INFORMATION:

\$1000.00	100	Claim?	Yes
\$500.00	2700	Claim?	Yes
\$250.00	1200	Claim?	Yes
\$250.00	1550	Claim?	No

1 2 3
4 5 6
7 8 9
0 A-Z CLEAR

DAILY JAR CLUB NEWS JAR INFO

License # _____ Your Club Name Here _____

TIP JAR BAR BOOK

Jar Type	Date Close	Serial Number	Winner #1	Claimed	Date	Winner #2	Claimed	Date
GREAT	03/14/2005	30002	1435	Yes	03/14/2005	Winner #2:		
GREAT	03/30/2005	30003	935	No		Winner #2:		
RWB	03/11/2005	20002	13	Yes	03/11/2005	Winner #2:	213	Yes 03/12/2005
RWB	03/24/2005	20003	513	No		Winner #2:	613	No
RWB	03/30/2005	20004	513	Yes	03/30/2005	Winner #2:	13	Yes 03/30/2005
SKUNK	03/28/2005	40001	733	Yes	03/28/2005	Winner #2:		
SKUNK	03/28/2005	40002	1245	No		Winner #2:		
SKUNK	03/28/2005	40003	845	Yes	03/28/2005	Winner #2:		
SKUNK	03/28/2005	40004	245	Yes	03/28/2005	Winner #2:		
SKUNK	03/29/2005	40005	745	Yes	03/30/2005	Winner #2:		
SKUNK	03/31/2005	40006	845	Yes	03/31/2005	Winner #2:		
TRIPLE	03/13/2005	10002	1100	No		Winner #2:	1200	Yes 03/13/2005
			500	Yes	03/13/2005	Winner #4:		
TRIPLE	03/19/2005	10003	400	Yes	03/19/2005	Winner #2:	500	Yes 03/19/2005
			600	No		Winner #4:		
TRIPLE	03/29/2005	10001	400	Yes	03/29/2005	Winner #2:	500	Yes 03/30/2005
			600	Yes	03/29/2005	Winner #4:		
TRIPLE	03/30/2005	10004	150	No		Winner #2:	250	Yes 03/30/2005

The Tip Jar Bar Book is used in a binder at the bar for your members to look up winning number information. It can be printed in a variety of formats, including a new page for each jar type and/or date, with a variety of sorting options.

Track and control your Bingo gaming operations. Bingo today is much more complicated, in terms of sales, pay outs and customer rewards than almost anyone realizes. Bingo gaming is generally a break-even or losing proposition to the club; in general, the tip jar revenue provides the profitability for the Bingo session, and the Bingo games provide the draw to attract people to the session. Because of this, it is vitally important that both sides of this equation are controlled by your software. Most Point-of-Sale Software packages and cash registers are not capable of automatically calculating Bingo pay outs, especially when multiple levels are paid per game, or when the pay outs may include a number of pari-mutuel calculations, with portions reserved for the house and/or carry-overs to the next session. JarTrek's Bingo Module does all of these things, plus calculating player rewards in the form of points, which helps drive repeat business to grow your Bingo attendance. MemberTrek© is used to control player points, so that you can use all of the membership tracking features for your Bingo players as well as for your club members. And, because the Bingo module is integrated into JarTrek, you automatically get the ability to track tip jar sales and concession sales at each session.

The Bingo Payout screen allows the operator to enter the number of winner into pre-determined levels, automatically calculating and recording accurate payout amounts. Receipts can be printed for each individual payout and issued to runners for verification.

PAYOUT DESCRIPTION:	WINNERS:	WINS (EACH):
BLUE REG #1	1	134.00
BLUE REG #2	2	117.00
BLUE REG #3	0	100.00
NOT USED		
NOT USED		
NOT USED		
ADDITIONAL AMOUNT PAID:		0.00
TOTAL PAID:	3	\$368.00

BINGO
PAY
SLIP

NUT

SUPER
CRAZY

Your Club Name Here

BINGO SESSION PROFIT REPORT

All Dates, All Times, All Sessions

Session Name	Game Description	Quantity Sold	Amount Sold	Quantity Paid	Amount Paid	Profit
AFTERNOON SESSION	PACKAGE	500	\$28.00	0.00	\$0.00	\$28.00
	EARLYBIRD	106.00	\$106.00	1.00	(\$20.00)	\$106.00
	BIG PACKAGE	152.00	\$1,781.00	38.00	(\$1,241.00)	\$440.00
AFTERNOON SESSION TOTAL		263.00	\$1,945.00			
Grand Total		263.00	\$1,945.00			

PACKAGE EXPLOSION:

Session Name	Package Description	Game Description	Qty Sold	Amount
AFTERNOON SESSION	REGULAR #1	500	\$4	\$4
	REGULAR #2	500	\$4	\$4
	REGULAR #3	500	\$4	\$4
	REGULAR #4	500	\$4	\$4
	REGULAR #5	500	\$9	\$9
	FIRST JACKPOT	500	\$4	\$4
	REGULAR #6	500	\$4	\$4
	REGULAR #7	500	\$4	\$4
	REGULAR #8	500	\$11	\$11
	REGULAR #9	6.00	\$1.00	\$58.00
	FINAL JACKPOT	152.00	\$139.00	\$139.00
	PACKAGE TOTAL	152.00	\$139.00	\$139.00
	REGULAR #1	152.00	\$139.00	\$139.00
	REGULAR #2	152.00	\$139.00	\$139.00
	REGULAR #3	152.00	\$139.00	\$139.00
	REGULAR #4	152.00	\$139.00	\$139.00
	REGULAR #5	152.00	\$139.00	\$139.00
	REGULAR #6	152.00	\$139.00	\$139.00
	REGULAR #7	152.00	\$139.00	\$139.00
	REGULAR #8	152.00	\$139.00	\$139.00
	REGULAR #9	152.00	\$139.00	\$139.00
	REGULAR #10	152.00	\$139.00	\$139.00
	REGULAR #11	152.00	\$139.00	\$139.00
	REGULAR #12	152.00	\$139.00	\$139.00
	REGULAR #13	152.00	\$139.00	\$139.00
	REGULAR #14	152.00	\$139.00	\$139.00
	REGULAR #15	152.00	\$139.00	\$139.00
	REGULAR #16	152.00	\$139.00	\$139.00
	REGULAR #17	152.00	\$139.00	\$139.00
	REGULAR #18	152.00	\$139.00	\$139.00
	REGULAR #19	152.00	\$139.00	\$139.00
	REGULAR #20	152.00	\$139.00	\$139.00
	REGULAR #21	152.00	\$139.00	\$139.00
	REGULAR #22	152.00	\$139.00	\$139.00
	REGULAR #23	152.00	\$139.00	\$139.00
	REGULAR #24	152.00	\$139.00	\$139.00
	REGULAR #25	152.00	\$139.00	\$139.00
	REGULAR #26	152.00	\$139.00	\$139.00
	REGULAR #27	152.00	\$139.00	\$139.00
	REGULAR #28	152.00	\$139.00	\$139.00
	REGULAR #29	152.00	\$139.00	\$139.00
	REGULAR #30	152.00	\$139.00	\$139.00
	REGULAR #31	152.00	\$139.00	\$139.00
	REGULAR #32	152.00	\$139.00	\$139.00
	REGULAR #33	152.00	\$139.00	\$139.00
	REGULAR #34	152.00	\$139.00	\$139.00
	REGULAR #35	152.00	\$139.00	\$139.00
	REGULAR #36	152.00	\$139.00	\$139.00
	REGULAR #37	152.00	\$139.00	\$139.00
	REGULAR #38	152.00	\$139.00	\$139.00
	REGULAR #39	152.00	\$139.00	\$139.00
	REGULAR #40	152.00	\$139.00	\$139.00
	REGULAR #41	152.00	\$139.00	\$139.00
	REGULAR #42	152.00	\$139.00	\$139.00
	REGULAR #43	152.00	\$139.00	\$139.00
	REGULAR #44	152.00	\$139.00	\$139.00
	REGULAR #45	152.00	\$139.00	\$139.00
	REGULAR #46	152.00	\$139.00	\$139.00
	REGULAR #47	152.00	\$139.00	\$139.00
	REGULAR #48	152.00	\$139.00	\$139.00
	REGULAR #49	152.00	\$139.00	\$139.00
	REGULAR #50	152.00	\$139.00	\$139.00
	REGULAR #51	152.00	\$139.00	\$139.00
	REGULAR #52	152.00	\$139.00	\$139.00
	REGULAR #53	152.00	\$139.00	\$139.00
	REGULAR #54	152.00	\$139.00	\$139.00
	REGULAR #55	152.00	\$139.00	\$139.00
	REGULAR #56	152.00	\$139.00	\$139.00
	REGULAR #57	152.00	\$139.00	\$139.00
	REGULAR #58	152.00	\$139.00	\$139.00
	REGULAR #59	152.00	\$139.00	\$139.00
	REGULAR #60	152.00	\$139.00	\$139.00
	REGULAR #61	152.00	\$139.00	\$139.00
	REGULAR #62	152.00	\$139.00	\$139.00
	REGULAR #63	152.00	\$139.00	\$139.00
	REGULAR #64	152.00	\$139.00	\$139.00
	REGULAR #65	152.00	\$139.00	\$139.00
	REGULAR #66	152.00	\$139.00	\$139.00
	REGULAR #67	152.00	\$139.00	\$139.00
	REGULAR #68	152.00	\$139.00	\$139.00
	REGULAR #69	152.00	\$139.00	\$139.00
	REGULAR #70	152.00	\$139.00	\$139.00
	REGULAR #71	152.00	\$139.00	\$139.00
	REGULAR #72	152.00	\$139.00	\$139.00
	REGULAR #73	152.00	\$139.00	\$139.00
	REGULAR #74	152.00	\$139.00	\$139.00
	REGULAR #75	152.00	\$139.00	\$139.00
	REGULAR #76	152.00	\$139.00	\$139.00
	REGULAR #77	152.00	\$139.00	\$139.00
	REGULAR #78	152.00	\$139.00	\$139.00
	REGULAR #79	152.00	\$139.00	\$139.00
	REGULAR #80	152.00	\$139.00	\$139.00
	REGULAR #81	152.00	\$139.00	\$139.00
	REGULAR #82	152.00	\$139.00	\$139.00
	REGULAR #83	152.00	\$139.00	\$139.00
	REGULAR #84	152.00	\$139.00	\$139.00
	REGULAR #85	152.00	\$139.00	\$139.00
	REGULAR #86	152.00	\$139.00	\$139.00
	REGULAR #87	152.00	\$139.00	\$139.00
	REGULAR #88	152.00	\$139.00	\$139.00
	REGULAR #89	152.00	\$139.00	\$139.00
	REGULAR #90	152.00	\$139.00	\$139.00
	REGULAR #91	152.00	\$139.00	\$139.00
	REGULAR #92	152.00	\$139.00	\$139.00
	REGULAR #93	152.00	\$139.00	\$139.00
	REGULAR #94	152.00	\$139.00	\$139.00
	REGULAR #95	152.00	\$139.00	\$139.00
	REGULAR #96	152.00	\$139.00	\$139.00
	REGULAR #97	152.00	\$139.00	\$139.00
	REGULAR #98	152.00	\$139.00	\$139.00
	REGULAR #99	152.00	\$139.00	\$139.00
	REGULAR #100	152.00	\$139.00	\$139.00
	REGULAR #101	152.00	\$139.00	\$139.00
	REGULAR #102	152.00	\$139.00	\$139.00
	REGULAR #103	152.00	\$139.00	\$139.00
	REGULAR #104	152.00	\$139.00	\$139.00
	REGULAR #105	152.00	\$139.00	\$139.00
	REGULAR #106	152.00	\$139.00	\$139.00
	REGULAR #107	152.00	\$139.00	\$139.00
	REGULAR #108	152.00	\$139.00	\$139.00
	REGULAR #109	152.00	\$139.00	\$139.00
	REGULAR #110	152.00	\$139.00	\$139.00
	REGULAR #111	152.00	\$139.00	\$139.00
	REGULAR #112	152.00	\$139.00	\$139.00
	REGULAR #113	152.00	\$139.00	\$139.00
	REGULAR #114	152.00	\$139.00	\$139.00
	REGULAR #115	152.00	\$139.00	\$139.00
	REGULAR #116	152.00	\$139.00	\$139.00
	REGULAR #117	152.00	\$139.00	\$139.00
	REGULAR #118	152.00	\$139.00	\$139.00
	REGULAR #119	152.00	\$139.00	\$139.00
	REGULAR #120	152.00	\$139.00	\$139.00
	REGULAR #121	152.00	\$139.00	\$139.00
	REGULAR #122	152.00	\$139.00	\$139.00
	REGULAR #123	152.00	\$139.00	\$139.00
	REGULAR #124	152.00	\$139.00	\$139.00
	REGULAR #125	152.00	\$139.00	\$139.00
	REGULAR #126	152.00	\$139.00	\$139.00
	REGULAR #127	152.00	\$139.00	\$139.00
	REGULAR #128	152.00	\$139.00	\$139.00
	REGULAR #129	152.00	\$139.00	\$139.00
	REGULAR #130	152.00	\$139.00	\$139.00
	REGULAR #131	152.00	\$139.00	\$139.00
	REGULAR #132	152.00	\$139.00	\$139.00
	REGULAR #133	152.00	\$139.00	\$139.00
	REGULAR #134	152.00	\$139.00	\$139.00
	REGULAR #135	152.00	\$139.00	\$139.00
	REGULAR #136	152.00	\$139.00	\$139.00
	REGULAR #137	152.00	\$139.00	\$139.00
	REGULAR #138	152.00	\$139.00	\$139.00
	REGULAR #139	152.00	\$139.00	\$139.00
	REGULAR #140	152.00	\$139.00	\$139.00
	REGULAR #141	152.00	\$139.00	\$139.00
	REGULAR #142	152.00	\$139.00	\$139.00
	REGULAR #143	152.00	\$139.00	\$139.00
	REGULAR #144	152.00	\$139.00	\$139.00
	REGULAR #145	152.00	\$139.00	\$139.00
	REGULAR #146	152.00	\$139.00	\$139.00
	REGULAR #147	152.00	\$139.00	\$139.00
	REGULAR #148	152.00	\$139.00	\$139.00
	REGULAR #149	152.00	\$139.00	\$139.00
	REGULAR #150	152.00	\$139.00	\$139.00
	REGULAR #151	152.00	\$139.00	\$139.00
	REGULAR #152	152.00	\$139.00	\$139.00
	REGULAR #153	152.00	\$139.00	\$139.00
	REGULAR #154	152.00	\$139.00	\$139.00
	REGULAR #155	152.00	\$139.00	\$139.00
	REGULAR #156	152.00	\$139.00	\$139.00
	REGULAR #157	152.00	\$139.00	\$139.00
	REGULAR #158	152.00	\$139.00	\$139.00
	REGULAR #159	152.00	\$139.00	\$139.00
	REGULAR #160	152.00	\$139.00	\$139.00
	REGULAR #161	152.00	\$139.00	\$139.00
	REGULAR #162	152.00	\$139.00	\$139.00
	REGULAR #163	152.00	\$139.00	\$139.00
	REGULAR #164	152.00	\$139.00	\$139.00
	REGULAR #165	152.00	\$139.00	\$139.00
	REGULAR #166	152.00	\$139.00	\$139.00
	REGULAR #167	152.00	\$139.00	\$139.00
	REGULAR #168	152.00	\$139.00	\$139.00
	REGULAR #169	152.00	\$139.00	\$139.00
	REGULAR #170	152.00	\$139.00	\$139.00
	REGULAR #171	152.00	\$139.00	\$139.00
	REGULAR #172	152.00	\$139.00	\$139.00
	REGULAR #173	152.00	\$139.00	\$139.00
	REGULAR #174	152.00	\$139.00	\$139.00
	REGULAR #175	152.00	\$139.00	\$139.00
	REGULAR #176	152.00	\$139.00	\$139.00
	REGULAR #177	152.00	\$139.00	\$139.00
	REGULAR #178	152.00	\$139.00	\$139.00
	REGULAR #179	152.00	\$139.00	\$139.00
	REGULAR #180	152.00	\$139.00	\$139.00
	REGULAR #181	152.00	\$139.00	\$139.00
	REGULAR #182	152.00	\$139.00	\$139.00
	REGULAR #183	152.00	\$139.00	\$139.00
	REGULAR #184	152.00	\$139.00	\$139.00
	REGULAR #185	152.00	\$139.00	\$139.00
	REGULAR #186	152.00	\$139.00	\$139.00
	REGULAR #187	152.00	\$139.00	\$139.00
	REGULAR #188	152.00	\$139.00	\$139.00
	REGULAR #189	152.00	\$139.00	\$139.00
	REGULAR #190	152.00	\$139.00	\$139.00
	REGULAR #191	152.00	\$139.00	\$139.00
	REGULAR #192	152.00	\$139.00	\$139.00
	REGULAR #193	152.00	\$139.00	\$139.00
	REGULAR #194	152.00	\$139.00	\$139.00
	REGULAR #195	152.00	\$139.00	\$139.00
	REGULAR #196	152.00	\$139.00	\$139.00
	REGULAR #197	152.00	\$139.00	\$139.00
	REGULAR #198	152.00	\$139.00	\$139.00
	REGULAR #199	152.00	\$139.00	\$139.00
	REGULAR #200	152.00	\$139.00	\$139.00
	REGULAR #201	152.00	\$139.00	\$139.00
	REGULAR #202	152.00	\$139.00	\$139.00
	REGULAR #203	152.00	\$139.00	\$139.00
	REGULAR #204	152.00	\$139.00	\$139.00
	REGULAR #205	152.00	\$139.00	\$139.00
	REGULAR #206	152.00	\$139.00	\$139.00
	REGULAR #207	152.00	\$139.00	\$139.00
	REGULAR #208	152.00	\$139.00	\$139.00
	REGULAR #209	152.00	\$139.00	\$139.00
	REGULAR #210	152.00	\$139.00	\$139.00
	REGULAR #211	152.00	\$139.00	\$139.00
	REGULAR #212	152.00	\$139.00	\$139.00
	REGULAR #213	152.00	\$139.00	\$139.00
	REGULAR #214	152.00	\$139.00	\$139.00
	REGULAR #215	152.00	\$139.00	\$139.00
	REGULAR #216	152.00	\$139.00	\$139.00

You're probably **wasting a lot of time and energy on maintaining membership information.** JarTrek's MemberTrek© module allows for the maintenance of all member information that you need to control your membership. Dues and other member-related payments can even be made at the bar while updating the member's information automatically. Depending on the type

MemberTrak - Add/Maintain Member Information

Functions: NEW Add New Change Delete Find Ok Cancel Member # Batch Quit

Name and Address Demographics Comments Accounting Recurring Charges

Member Number: 001782 Member Type: R - Regular Members Member Status: G - Good Standing

Name and Address

First Name: John Middle Name: Last Name: Public Name Suffix: Jr Address Line 1: 111 Main Street Address Line 2: Apt 11 City: Anytown State: MD Zip: 21742 Phone Number: (111)222-3333 E-mail Address: JDP@YAHO.COM

Cardholder Application

Facility Number: 0 Card #: 1495 Activation Date: 06/01/2007 Expiration Date: 05/30/2008 Member Since: 06/01/2007

of door controller you have, MemberTrek© can also interface to your door system, automatically disabling or enabling a specific access control card. It includes a word processor and label generator to allow you to send personalized mass mail to some or all of your members.

MemberTrak - Add/Maintain Member Information

Functions: NEW Add New Change Delete Find Ok Cancel

Name and Address Demographics Comments Accounting Recurring Charges

Current Dues Information:

Number: R001 Name: Joseph P Smith Jr. Recurring Dues Amount: 15.00 Expiration Date: 12/31/2005 Dues Paid?: Yes Paid To Date: 15.00 Last Payment Date: 01/20/2005 Total Balance Due: 0.00

Opt	Charge Date	Charge Description	Amount	Pay Date	Ref #	Pay Amt	Exp. Date
	03/01/2005	Key Card	5.00	03/15/2005	27	5.00	
	01/01/2005	*Club Dues**	15.00	01/20/2005	28	15.00	12/31/2005
	06/01/2004	Bowling League	50.00	06/01/2004	25	50.00	06/01/2005
	01/01/2004	*Club Dues**	15.00	01/02/2004	24	15.00	12/31/2004
			15.00	01/31/2003	23	15.00	12/31/2003
			15.00	01/15/2002	22	15.00	12/31/2002

Show History Print Statement Add New Posting

American Micro Tech

MEMBERSHIP ROSTER WITH COMMENTS

Card #	Name	Address	City, State, Zip Code	Phone #	DOB	Date Joined
R002	Mugger, Fred J	105 Fake Street	Hagerstown MD 21742	301-111-1111	12/15/1920	06/11/1940
Probation record: On May 1, 1975, Fred struck a bartender. Probation lifted on 1/1/1977. On November 17, 1989, Fred was banned for drunk and disorderly. Probation lifted on 1/1/1991. On June 12, 2000, Fred embezzled \$100. Probation lifted on 1/1/2004.						
R001	Smith Jr., Joseph P	112 North East Avenue Apt 203	Hagerstown MD 21742	301-111-2222	05/14/1952	05/15/1995
Initiation approved with reservations on 1/1/2001. Probationary for first year. Probation lifted on 1/1/2002 with no reported problems.						

American Micro Tech

MEMBERSHIP INCOME REPORT

01/01/2005 To 06/30/2005

Billing Code	Month	Charges	Payments
Membership Dues	January, 2005	\$30.00	\$30.00
	May, 2005	\$30.00	\$30.00
	Membership Dues	\$60.00	\$60.00
Bowling League	January, 2005	\$50.00	\$50.00
	Bowling League	\$50.00	\$50.00
Golf League			

American Micro Tech

CHARGE POSTING JOURNAL

Initiation Fee	Member #	Name	Charge Date	Qty.	Price	Extension	Date Paid	Remit #	Paid	Exp. Date
Key Card	R002	Fred J Mugger	05/05/2005	1.00	\$15.00	\$15.00		0	\$0.00	07/01/2005
	R003	Phillip K Liebendorfer III	05/05/2005	1.00	\$20.00	\$20.00	05/05/2005	33	\$20.00	
	R002	Fred J Mugger	05/05/2005	1.00	\$20.00	\$20.00		0	\$0.00	
Total **Club Dues**					\$15.00				\$0.00	
Total Initiation Fee					\$500.00				\$250.00	
				1.00	\$0.00	\$0.00		0	\$0.00	
						\$400.00	33	\$5.00	\$0.00	

MemberTrek reports are issued using a powerful report filter, allowing great flexibility in sorting and selecting information for each report

Over the past 10 years, JarTrek© has evolved into one of the most comprehensive, feature rich touch screen point of sale systems available for member based businesses and social organizations.

American Micro Tech was founded in the 1950's providing businesses with financial accountability equipment and services. Over the years it has evolved and expanded to include computer based systems, along with software development. During these years of technological change we've had the opportunity to work with a diverse array of hospitality, retail, educational, and fraternal organizations. It's been a privilege to assist our clients by creating business solutions designed to help manage information efficiently and securely, while enhancing productivity.

We are always looking for ways to enhance the software we design, and appreciate input and suggestions from end users as well as prospective users. Please feel free to contact us at 1-800-488-0017 or email us at info@goamtech.com.



19721 Leitersburg Pike
Hagerstown, MD 21742
1-800-488-0017